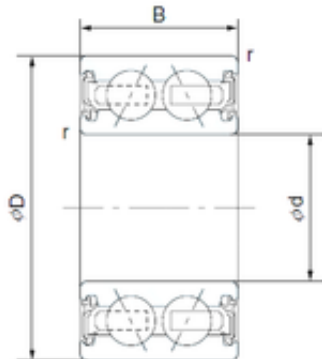




CYSD 46/38-1AC2RS angular contact ball bearings



Bearing No. 46/38-1AC2RS

Size	38x54x17 mm
Bore Diameter	38 mm
Outer Diameter	54 mm
Width	17 mm
d	38 mm
D	54 mm
B	17 mm
C	17 mm
Basic dynamic load rating (C)	12,5 kN

46/38-1AC2RS Bearing 2D drawings and 3D CAD models