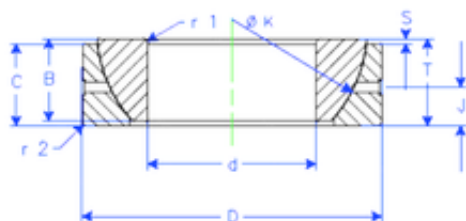




Enduro GE 32 SX plain bearings



Bearing No. GE 32 SX

Size	32x58x17 mm
Bore Diameter	32 mm
Outer Diameter	58 mm
Width	17 mm
d	32 mm
D	58 mm
T	17 mm
B	17 mm
C	16 mm
r1 min.	1 mm
r2 min.	1 mm
J	8,5 mm
K	52 mm
S	2 mm
Weight	0,240857352 Kg
Basic dynamic load rating (C)	71 kN

GE 32 SX Bearing 2D drawings and 3D CAD models