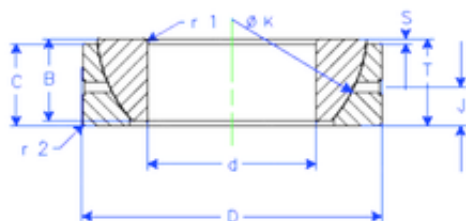




Enduro GE 50 SX plain bearings



Bearing No. GE 50 SX

Size	50x80x20 mm
Bore Diameter	50 mm
Outer Diameter	80 mm
Width	20 mm
d	50 mm
D	80 mm
T	20 mm
B	20 mm
C	19 mm
r1 min.	1 mm
r2 min.	1 mm
J	10 mm
K	74 mm
S	4,3 mm
Weight	0,454952776 Kg
Basic dynamic load rating (C)	123 kN

GE 50 SX Bearing 2D drawings and 3D CAD models